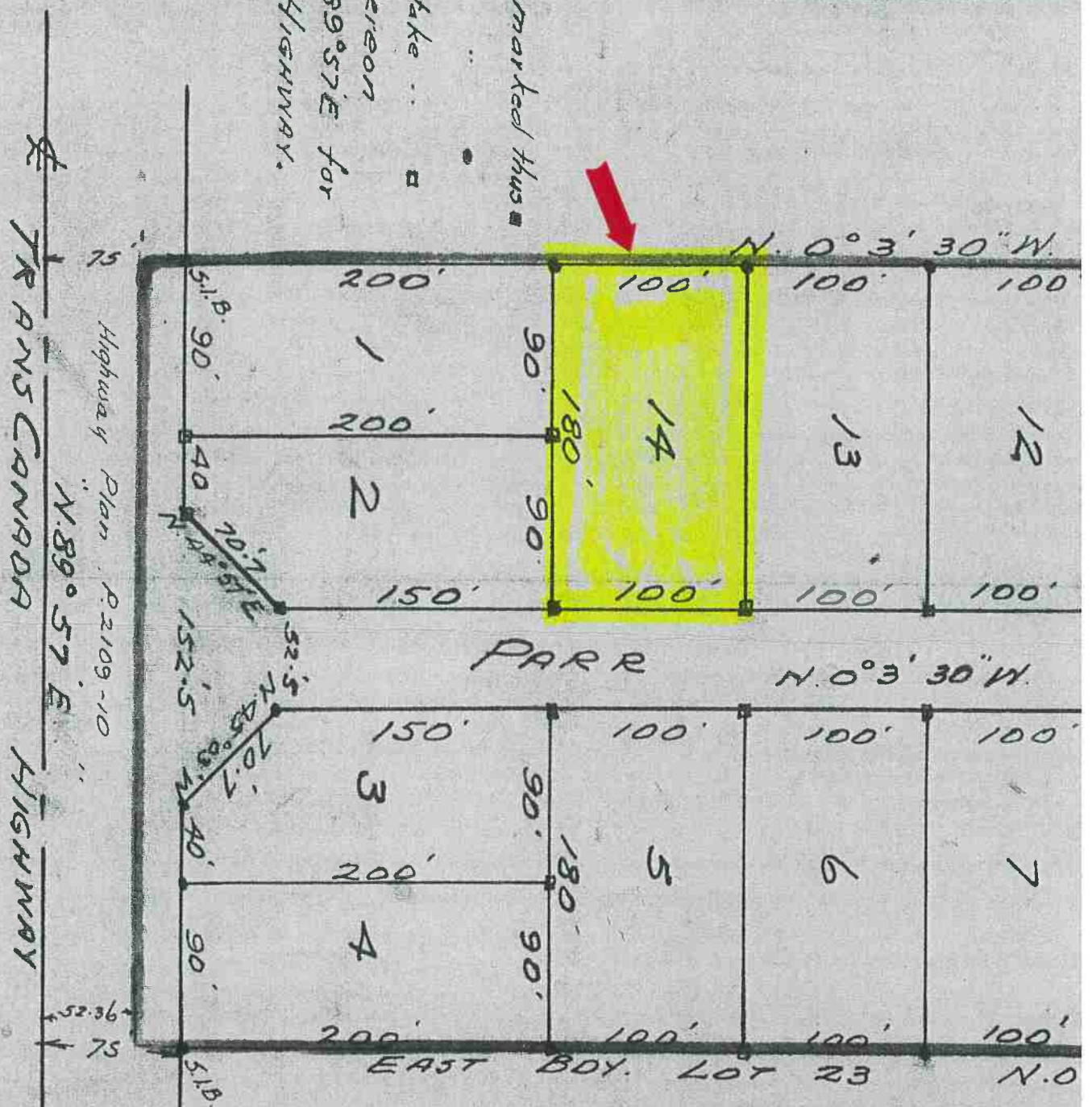


358



Iron bar marked thus ■
 Wooden Stake . . . ■
 rings hereon
 from N. 89° 57' E for
 CANADA HIGHWAY.

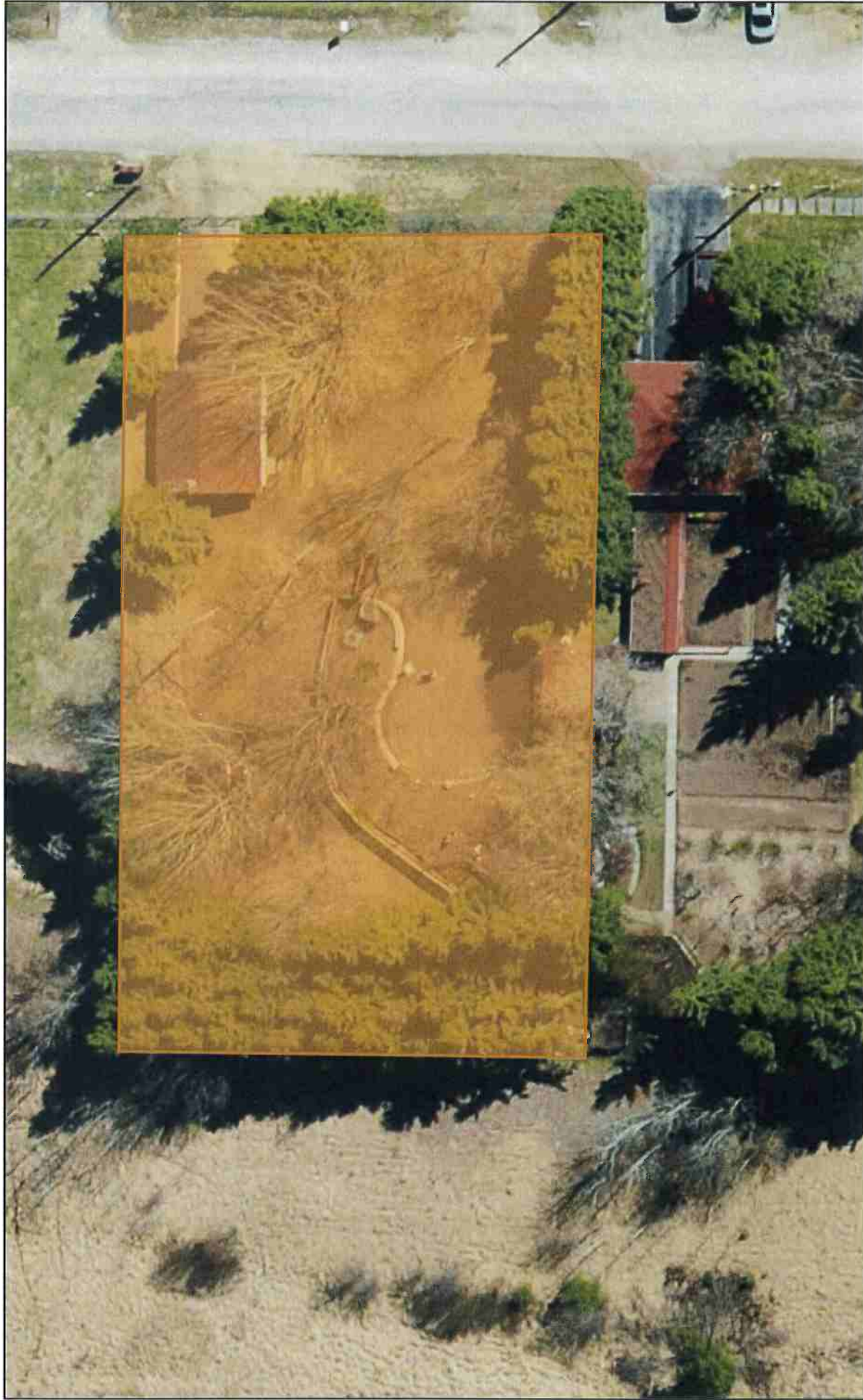
Highway Plan P. 2109-10
 N. 89° 57' E
 TRANS CANADA HIGHWAY

TRANS CANADA

WEST BOY LOT 23

DATED at Ber.
 I, Samuel E.
 above named
 Sworn before
 this 13th
 A Comr

8 Parr Ave



2021-11-08, 11:16:17 AM

Dryden Imagery 10cm (2012)



Red: Band_1

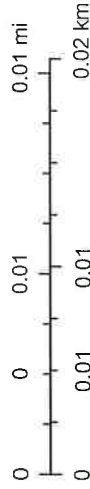


Green: Band_2



Blue: Band_3

1:564



Esri, HERE, Garmin, INCREMENT P, NGA, USGS, NRCAN

8 Parr Ave



8 Parr Ave

2021-11-08, 11:18:37 AM

Dryden Imagery 10cm (2012)

Red: Band_1



Green: Band_2



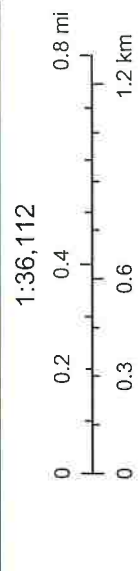
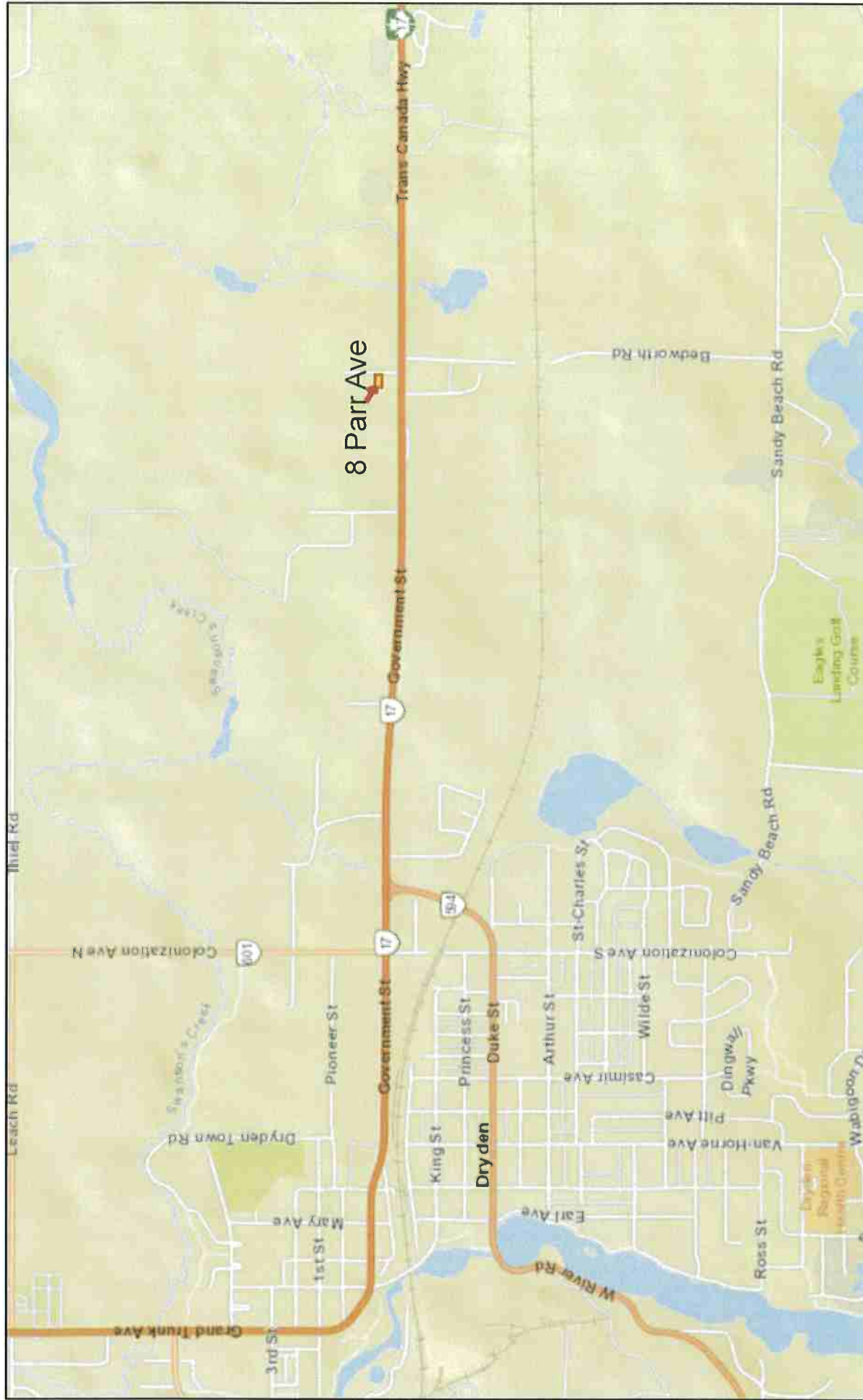
Blue: Band_3

1:2,257



Esri, HERE, Garmin, INCREMENT P, NGA, USGS, NRCAN

8 Parr Ave



1:36,112

2021-11-08, 11:19:40 AM

Esri, HERE, Garmin, INCREMENT P, NGA, USGS, NRCAN

Esri, HERE, Garmin, INCREMENT P, NGA, USGS, NRCAN

4.6 RURAL RESIDENTIAL (RR) ZONE

No person shall within a Rural Residential (RR) Zone, use any land or erect, alter or use any building or structure except in accordance with the following:

4.6.1 Permitted Uses

- i) home industry
- ii) home occupation
- iii) single detached dwelling

4.6.2 Zone Requirements

- i) Minimum Lot Area 1.0 hectares
- ii) Minimum Lot Frontage 60.0 metres
- iii) Minimum Yard Requirements
 - a) Front Yard 15.0 m.
 - b) Interior Side Yard 7.0 m.
 - c) Exterior Side Yard 15.0 m.
 - d) Rear Yard 15.0 m.
- iv) Maximum Lot Coverage
 - on lots less than 1.0 ha - 10%
 - on lots greater than 1.0 ha - 5%
- v) Minimum Landscaped Open Space 20%

4.6.3 Exceptions

