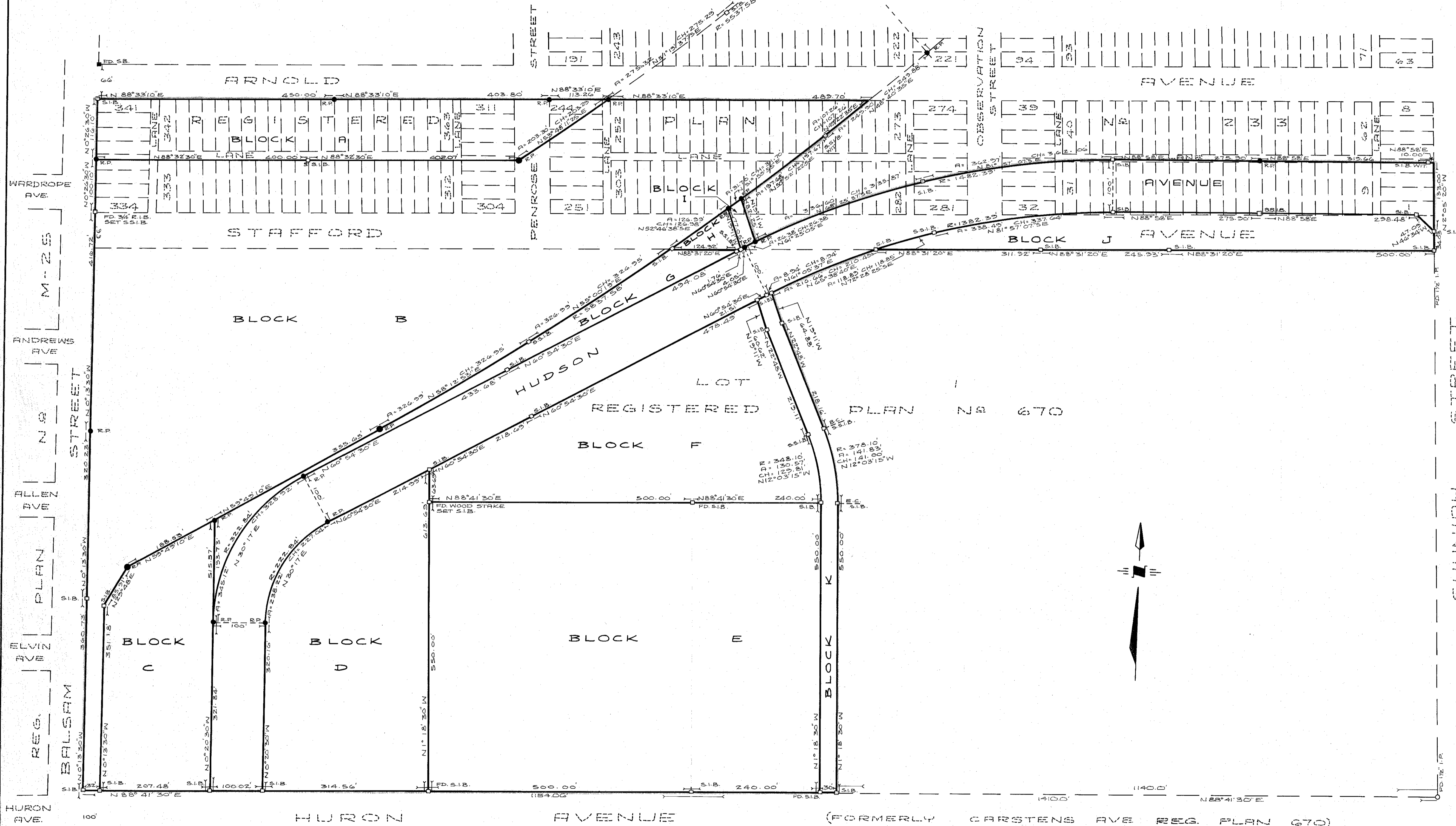


PLAN AND FIELD NOTES
OF SUBDIVISION OF
LOTS 1, 2 & 3, LOTS 9 TO 34 INCL., LOTS 280 & 281, LOTS 244
TO 265 INCL., LOTS 295 TO 363 INCL., PART OF LOTS 4, 35,
279, 282 TO 288 INCL., 290 TO 294 INCL., 266 TO 271 INCL.
REGISTERED PLAN NO 233
PART OF LOT 1, REGISTERED PLAN NO 670 AND
PORTIONS OF THE STREETS AND LANES ON REG.
PLAN NO 233 STOPPED UP AND CLOSED BY BY-LAW
NO 5422 OF THE CITY OF PORT ARTHUR REG. AS NO 121555
CITY OF PORT ARTHUR
P. R. MILTON O.L.S., 1966
SCALE: 1 INCH = 100 FEET

Approved under Section 28 of
THE PLANNING ACT.
This *Walter* 18 68
NO SEAL
MINISTER OF MUNICIPAL AFFAIRS

9:30 A
27th JANUARY
69 853

Walter



NOTE:
STREETS AND LANES STOPPED UP AND CLOSED BY BY-LAW
NO 5422 OF THE CITY OF PORT ARTHUR REGISTERED
IN THE REGISTRY OFFICE AT PORT ARTHUR AS NO 121555
DATED 15th DAY OF AUGUST 1966.

SURVEYOR'S CERTIFICATE

I HEREBY CERTIFY THAT;
1/ THIS SURVEY AND PLAN ARE CORRECT AND IN ACCORDANCE WITH
THE SURVEYS ACT AND THE REGISTRY ACT AND THE REGULATIONS
MADE THEREUNDER.
2/ THE SURVEY WAS COMPLETED ON THE 7th DAY OF APRIL 1966.

P.R. Milton
P. R. MILTON
ONTARIO LAND SURVEYOR

- D S.I.B. - INDICATES 1"X1"X48" STANDARD IRON BAR
 - D S.S.I.B. - INDICATES 1"X1"X24" SHORT STANDARD IRON BAR
 - I.B. - INDICATES 3/8"X5/8"X24" IRON BAR
 - R.P. - INDICATES ROCK POST
 - I.P. - INDICATES IRON PIPE
 - FD. - INDICATES FOUND
 - S.B. - INDICATES SUBDIVISION BAR
- BEARINGS HEREON ARE DERIVED FROM THE SOUTH LIMIT OF
ARNOLD AVENUE REGISTERED PLAN NO 233 ASSUMED TO BE N88°33'10"E.

OWNER'S CERTIFICATE

THIS IS TO CERTIFY THAT;
1/ BLOCKS A, B, C, D, E, F, G, H, I, J, K, THE STREET, NAMELY HUDSON AVENUE,
AS DESIGNATED WITHIN THE AREA OF SURVEY OUTLINED HAVE BEEN
LAID OUT IN ACCORDANCE WITH OUR INSTRUCTIONS.

2/ THE STREET IS HEREBY DEDICATED AS PUBLIC HIGHWAY.
L. Dennis
L. DENNIS (MISS)
SAUL LASKIN
THE CORPORATION OF THE CITY OF PORT ARTHUR

PHILLIPS & GRVIN
SURVEYORS & ENGINEERS
PORT ARTHUR DEC. 20/66

