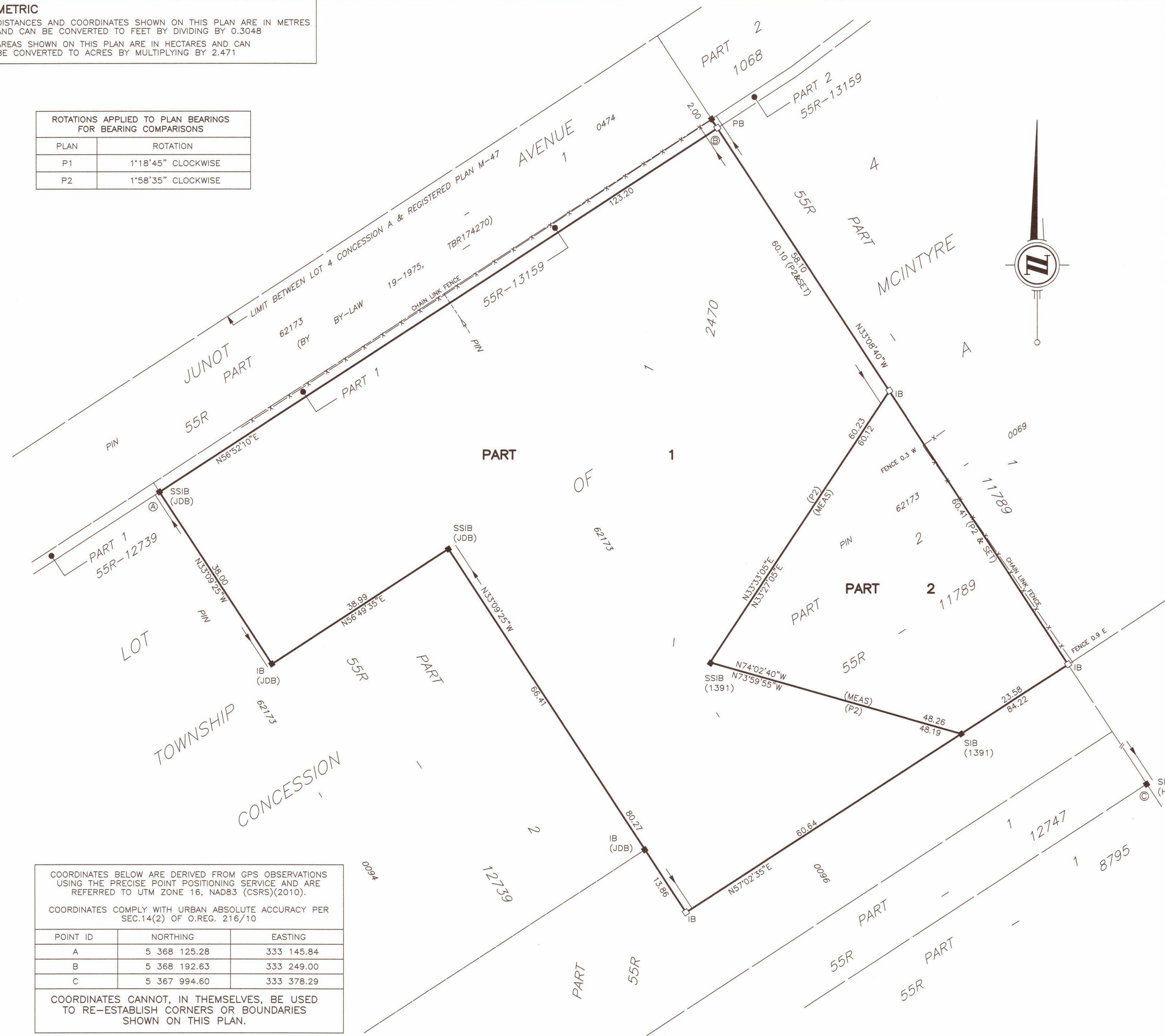


METRIC
 DISTANCES AND COORDINATES SHOWN ON THIS PLAN ARE IN METRES AND CAN BE CONVERTED TO FEET BY DIVIDING BY 0.3048
 AREAS SHOWN ON THIS PLAN ARE IN HECTARES AND CAN BE CONVERTED TO ACRES BY MULTIPLYING BY 2.471

ROTATIONS APPLIED TO PLAN BEARINGS FOR BEARING COMPARISONS	
PLAN	ROTATION
P1	1°18'45" CLOCKWISE
P2	1°58'35" CLOCKWISE



I REQUIRE THIS PLAN TO BE DEPOSITED UNDER THE LAND TITLES ACT.

PLAN 55R-

RECEIVED AND DEPOSITED

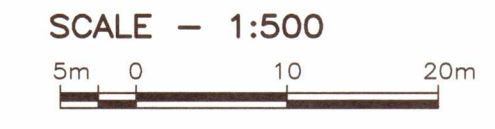
DATE _____ DATE _____

PETER de HAAN
ONTARIO LAND SURVEYOR

REPRESENTATIVE FOR THE LAND REGISTRAR FOR THE LAND TITLES DIVISION OF THUNDER BAY (55)

PARTS SCHEDULE				
PART	LOT	CONCESSION	PIN	AREA
1	PART OF 4	A	PART OF 62173-0096	0.94 ha
2			PART OF 62173-0069	0.21 ha

PLAN OF SURVEY OF PART OF LOT 4 CONCESSION A TOWNSHIP OF MCINTYRE CITY OF THUNDER BAY DISTRICT OF THUNDER BAY



NOTES

BEARINGS ARE UTM GRID, DERIVED FROM OBSERVED REFERENCE POINTS A AND B, HAVING A BEARING OF N56°52'10"E BY REAL TIME NETWORK (RTN) OBSERVATIONS, UTM ZONE 16, NAD83 (CSRS)(2010).
 DISTANCES ARE GROUND AND CAN BE CONVERTED TO GRID BY MULTIPLYING BY THE COMBINED SCALE FACTOR OF 0.999909.

LEGEND

□	DENOTES A PLANTED SURVEY MONUMENT
■	DENOTES A FOUND SURVEY MONUMENT
SIB	DENOTES STANDARD IRON BAR
IB	DENOTES IRON BAR
SSIB	DENOTES SHORT STANDARD IRON BAR
P1	DENOTES 55R-12739
P2	DENOTES 55R-11789
P3	DENOTES 55R-13159
HM	DENOTES H. GRAHAM O.L.S.
JDB	DENOTES J.D. BARNES LIMITED
1391	DENOTES MASKELL de HAAN LIMITED

SURVEYOR'S CERTIFICATE

I CERTIFY THAT:

- THIS SURVEY AND PLAN ARE CORRECT AND IN ACCORDANCE WITH THE SURVEYS ACT, THE SURVEYORS ACT AND THE LAND TITLES ACT AND THE REGULATIONS MADE UNDER THEM.
- THE SURVEY WAS COMPLETED ON THE 12TH DAY OF APRIL, 2019.

2019/04/15
DATE

Peter de Haan
PETER de HAAN
ONTARIO LAND SURVEYOR

COORDINATES BELOW ARE DERIVED FROM GPS OBSERVATIONS USING THE PRECISE POINT POSITIONING SERVICE AND ARE REFERRED TO UTM ZONE 16, NAD83 (CSRS)(2010).
 COORDINATES COMPLY WITH URBAN ABSOLUTE ACCURACY PER SEC.14(2) OF O.REG. 216/10

POINT ID	NORTHING	EASTING
A	5 368 125.28	333 145.84
B	5 368 192.63	333 249.00
C	5 367 994.60	333 378.29

COORDINATES CANNOT, IN THEMSELVES, BE USED TO RE-ESTABLISH CORNERS OR BOUNDARIES SHOWN ON THIS PLAN.

TBT ENGINEERING CONSULTING GROUP
 TBT SURVEYORS INC. - A WHOLLY OWNED SUBSIDIARY OF TBT ENGINEERING LIMITED

1918 YONGE STREET, THUNDER BAY, ON P7E 6T9
 T: (807) 624-5160 F: (807) 624-5161 www.tbte.ca

DRAWN BY: Z.W. CHECKED BY: PdeH DATED 2019/02/13
 DWG No.: Y:\Projects\2019\19-030 Form Architecture Junot\Microsurvey\19-030 Ref.dwg